



MOVE INN ESTATES
MAKING THE RIGHT MOVE



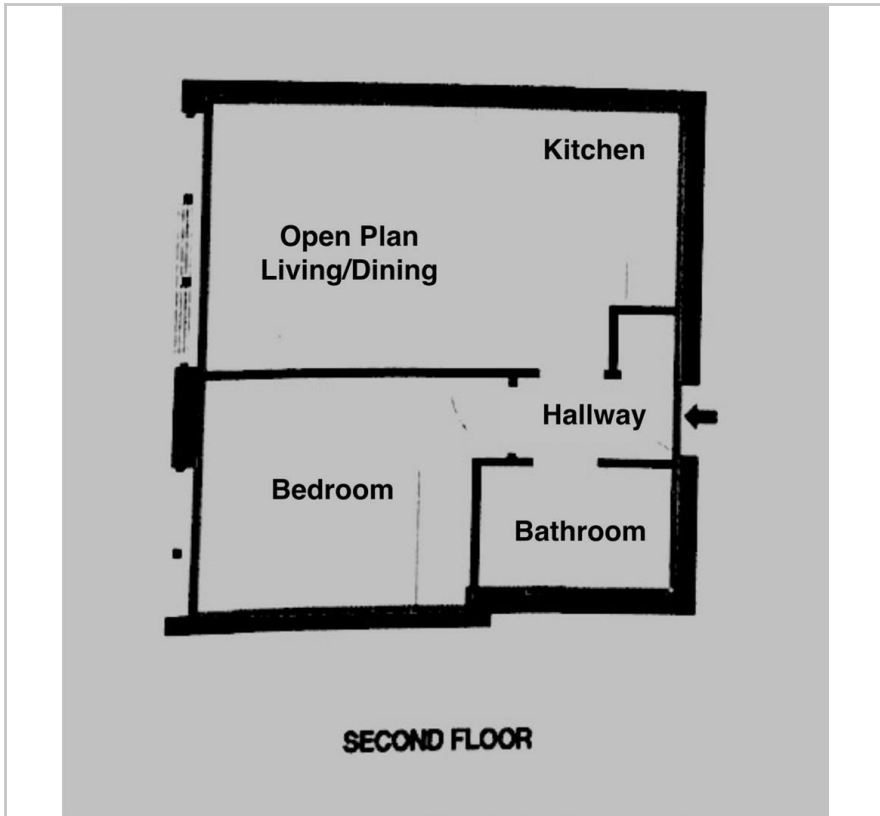
Nobel Drive

Harlington, Hayes, UB3 5FD

Price Guide £250,000



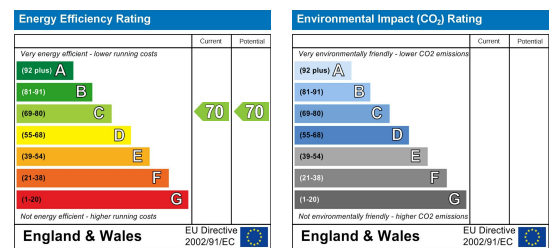
Floor Plan



Area Map



Energy Efficiency Graph



Viewing

Please contact our Move Inn Estates - Sales Office on 0208 574 4966 if you wish to arrange a viewing appointment for this property or require further information.

- Chain free
- Lift access
- Roof terrace
- Gated development
- Video entry system
- Allocated parking

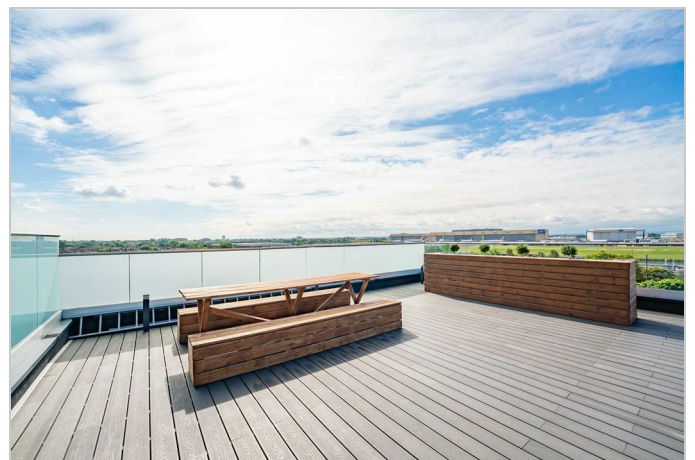
Chain-free! Beautifully presented throughout, Move Inn Estates bring to the market this luxury one bedroom apartment, situated on the second floor, with stunning presented roof terraces with views over Heathrow Airport.

This property comprises of; an open plan living area and kitchen which has an integrated dish washer, oven, hob and fridge freezer and a washer/dryer combo. one large double bedroom with fitted wardrobes and an en suite shower room can also be found.

Property Details:
 Lease Remaining - 128 years
 Ground Rent - £300 pa
 Service Charge - £800 pa

Further benefits include; electrical heating, built in bluetooth speakers/internet connection, allocated parking bay, intercom video system, secure gated development and a lift. Located just off the Bath Road and within easy reach of Heathrow Airport as well as the A4 and M4.

Viewings advised.



These particulars, whilst believed to be accurate are set out as a general outline only for guidance and do not constitute any part of an offer or contract. Intending purchasers should not rely on them as statements of representation of fact, but must satisfy themselves by inspection or otherwise as to their accuracy. No person in this firm's employment has the authority to make or give any representation or warranty in respect of the property.